

## PISTON WM X

L90 B10 > 60 000h | SDCM 3 | LLMF 91% | CRI 80

PRODUCT NAME	POWER CONSUMPTION	LUMEN OUTPUT*	EFFICACY*	PRODUCT SIZE	BEAM ANGLE	ORDER REFERENCE
PISTON WM X 15	15W	1850 Lm	123 lm/W	Ø 80 x 232 mm	70° / 15°	PIWX15
PISTON WM X 20	15W	1860 Lm	124 lm/W	Ø 80 x 232 mm	15° / 15°	PIWX20
PISTON WM X 25	20W	2260 Lm	113 lm/W	Ø 80 x 232 mm	50° / 50°	PIWX25

\*Values are given for colour temperature of 4000K and may vary for other options

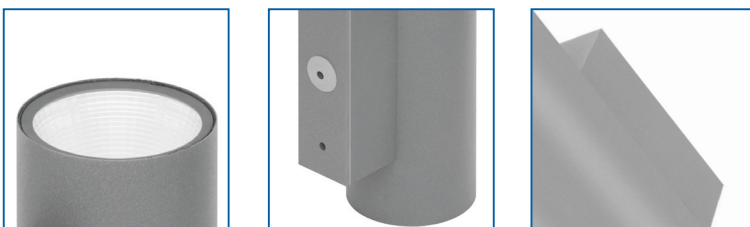
### MATERIALS

CASING - electrostatically painted aluminium;  
standard colour - anthracite grey

DIFFUSER - transparent tempered glass

### INSTALLATION

Wall mounted



### ORDER CODE

#### COLOUR TEMPERATURE

3000K 3K

4000K 4K

#### DRIVER TYPE

Standard ST

Dimming - DALI DL

#### CASING COLOUR

Grey GR

White WH

Black BL

Custom RAL

Order code example: **PIWX20-4K-ST-GR**